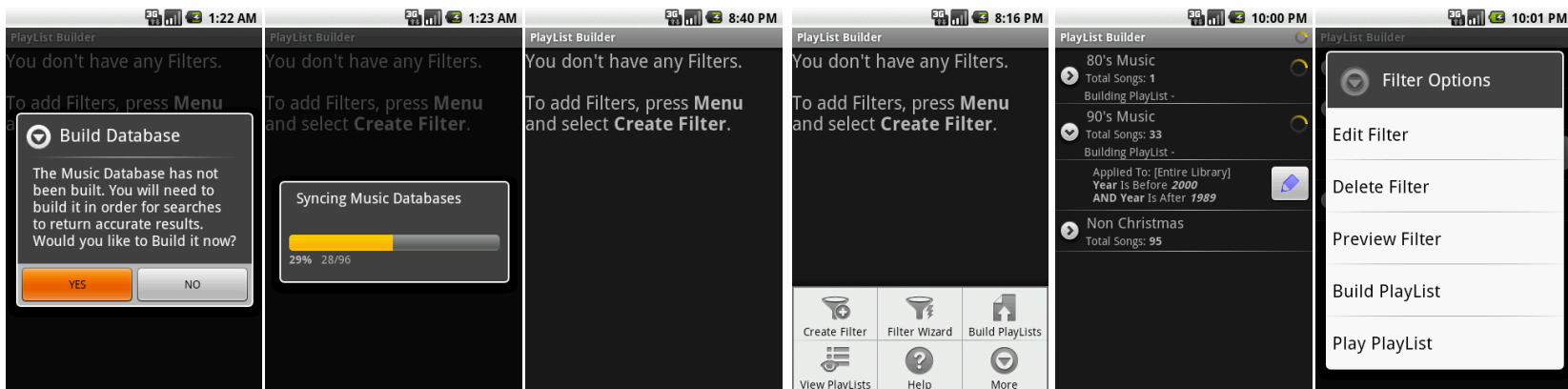




## Overview

**PlayList Builder** enables you to filter your Music Library on your **Android** phone using any number of criteria combinations. You can then save those results as a **PlayList** that can be used with the built-in Music Player. Your **Filters** are stored on your Phone and you can rebuild your **PlayLists** anytime your Music Library changes.

## Main Screen



When you first run **PlayList Builder**, you will be informed that the Database needs to be built. **PlayList Builder** maintains its own Music Database for better performance and results. Once the Database is built you will only need to Sync the Database whenever a change is made to the Music Library. **PlayList Builder** will attempt to recognize changes to the Music Library and prompt you to Sync the Database.

Once the Database is built, the **Main Screen** will state that you don't have any **Filters**.




## Main Screen (continued)

---

When you press the **MENU** button from the Main Screen you will see to following options:

- **Create Filter:** Press this to start configuring a new **Filter**.
- **Filter Wizard:** Starts the **Filter** Creation Wizard. This tool speeds up the creation some of the more common **Filters**. The Wizard will prompt you for few pieces of information and create a **Filter** based on that information.
- **Build PlayLists:** Builds **PlayLists** based on the **Filters** and adds them to the Music Player.
- **View Playlists:** Opens the built-in Music player and displays all of the **PlayLists**.
- **Help:** Opens the **Help Screen**.
- **More:** Displays the following options:
  - **Sync Database:** Syncs the Music Library with **PlayList Builder's** Database. If changes to the Music Library are not recognized, use this to Sync the Database.
  - **Backup Filters:** Stores the **Filters** database on the SD Card. Backups are stored in `data\data\com.jawsware.playlistbuilder\databases`
  - **Restore Filters:** Replaces the **Filters** database with a backup from the SD Card.
  - **Manage Filter Backup:** Choose old Backups and delete them.

Other Main Screen Elements:

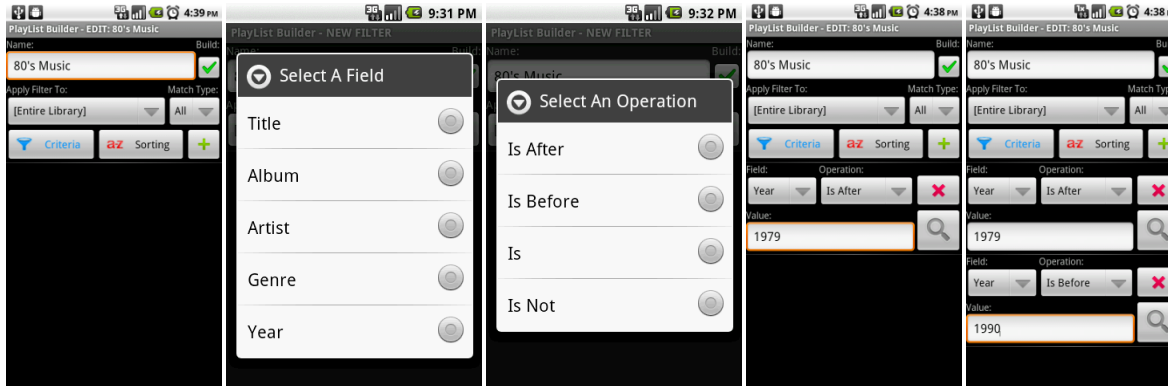
- **Spinning Progress:** Indicates that the **PlayList** is being built.
- **Circle Arrow:** Expands/Collapses showing/hiding summary information about the **Filter**.
- **Text below Name:** Displays information about the **Filter**. Indicates what the **Filter** is applied to as wells a summary of the **Criteria**.
- **Edit Button:**  Opens the **Edit Screen** for the selected **Filter**.

Holding your finger down on a **Filter** will display the **Context Menu** which contains the following choices:



- **Edit Filter:** Opens up the **Edit Screen** for the selected **Filter**.
- **Delete Filter:** Deletes the **Filter** and the **PlayList** in the Music Library (deleting the **PlayList** is optional).
- **Preview Filter:** Displays a screen showing the results that are generated from the **Filter**.
- **Build PlayList:** Generates a **PlayList** based on the results of the **Filter** and adds it to the Music Library.
- **Play PlayList:** Opens the built-in Music Player and starts playing the **PlayList** created from the results of the **Filter**.



## Creating a Filter



This outlines the steps to creating a new **Filter**. The example shows how to create a **Filter** for 80's Music.

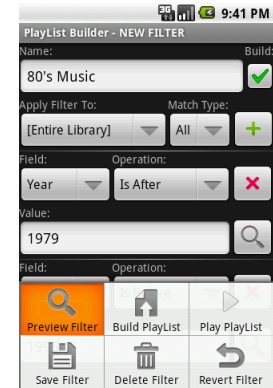
- From the Main Screen, press the **Menu** button, then the **Create Filter** button.
- Enter the name of the Filter in the **Name** box. In this example we'll enter "80's Music".
- Make sure the **Build** button is checked. This will tell the system to build a **PlayList** in the Music Library.
- Choose what to apply the Filter to. This can be the **Entire Library** or another **Filter**. In this example, choose "[Entire Library]".
- Choose whether the Music needs to match **All** the **Criteria** or only needs to match one (**Any**) of the **Criteria**. In this example, choose "All".
- Press the **Add Criteria**  button.
- Choose the Music **Field** to search. In this example, choose "Year".
- Choose the comparison **Operation**. In this example, choose "Is After".
- Enter the **Value** to search for. In this example, choose "1979".
- Press the **Add Criteria**  button again.
- Choose the Music **Field** to search. In this example, choose "Year".
- Choose the comparison **Operation**. In this example, choose "Is Before".
- Enter the **Value** to search for. In this example, choose "1990".

# jawshare PlayList Builder

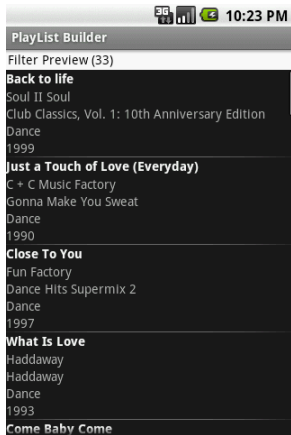


## Creating a Filter (continued)

- Press the **MENU** button and choose one of the following:
  - **Preview Filter:** Displays a screen showing the results that will be generated from the **Filter**.
  - **Build PlayList:** Generates a **PlayList** based on the results of the **Filter** and adds it to the Music Library.
  - **Play PlayList:** Opens the built-in Music Player and starts playing the **PlayList** created from the results of the **Filter**.
  - **Save Filter:** Saves the **Filter** and returns to the **Main Screen**.
  - **Delete PlayList:** Deletes the **Filter** and the **PlayList** in the Music Library (deleting the **PlayList** is optional) and returns to the **Main Screen**.
  - **Revert PlayList:** Cancel any changes since the last **Save/Build** and returns to the **Main Screen**.



## Preview Screen



Previewing a **Filter** will display a screen similar this.

# jawshare PlayList Builder



## Edit Screen

**Name:** The Name of the **Filter** and the Name of the **PlayList** that will be built and stored in the Music Library.

**Build:** Determines whether a **PlayList** will be built and added to the Music Library.

**Apply Filter To:** Determine what the **Filter** will be applied to. This can be the **Enter Library** or another **Filter**.

**Match Type:** Determines how filters will be applied.

- **All:** Music will need to match all the **Criteria** in order to be included.
- **Any:** Music will only need to match one of the **Criteria** in order to be included.

**Criteria:** Displays the **Filter's** criteria.

**Add Button** : Adds a new **Criteria**

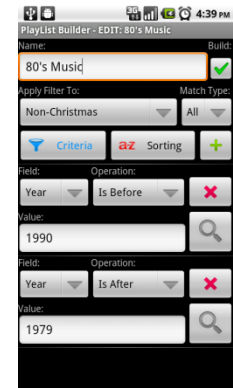
**Field:** Determines which Music **Field** will be searched. Chooses are: Title, Album, Artist, Composer, Genre or Year.

**Value:** Determines what to search for in the Music **Field**.

**Operation:** Determines the comparison that will be done between the **Field** and the **Value**.

Year Field chooses are:

- **Is:** Song's Year **Field** matches **Value** exactly
- **Is Not:** Song's Year **Field** is anything but **Value**
- **Is After:** Song's Year **Field** is the next year or later (choosing 1979 will return 1980 and on.)
- **Is Before:** Song's Year **Field** is the previous year or earlier (choosing 1990 will return 1989 and earlier)



# jawsware PlayList Builder

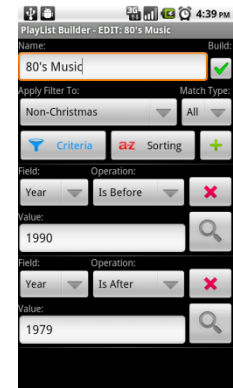


## Edit Screen (continued)

### Operation (continued).

All Other Fields chooses are:

- **Is:** Song's **Field** matches **Value** exactly
- **Is Not:** Song's **Field** is anything but the **Value**
- **Contains:** Song's **Field** has the **Value** at any position (choosing "the" will return "End of **The** Road", "Sweet**the**art", "**The** Sign", etc.)
- **Does Not Contain:** Does the opposite of **Contains**.
- **Starts With:** Song's **Field** starts with the **Value** (choosing "the" will return "**The** Sing" will not return "End of The Road" and "Sweetheart")
- **Ends With:** Same as **Starts With** except at the end of the Song's **Field**



**Remove Criteria Button** : Removes the **Criteria**.

**Preview Criteria Button** : Displays a screen showing the results that will be generated from the **Criteria**.

**Sorting:** Displays the **Filter's** sorting parameters.

**Add Button** : Adds a new **Sorting**

**Field:** Determines which Music **Field** will be used for sorting. Chooses are: Title, Album, Artist, Composer, Genre or Year.

**Direction:** Determines how the **Field** will be used for sorting.

**Remove Sorting Button** : Removes the **Sorting**.

